

Tel: 966 12 684 8046  
966 12 684 8959  
Fax: 966 12 640 5622  
AFS OEJDYKYX  
<http://www.sans.com.sa>  
E-mail: [aim@sans.com.sa](mailto:aim@sans.com.sa)

**KINGDOM OF SAUDI ARABIA**  
GENERAL AUTHORITY OF CIVIL AVIATION  
SAUDI AIR NAVIGATION SERVICES  
AERONAUTICAL INFORMATION MANAGEMENT  
P. O. BOX 929, JEDDAH - 21421

**AIP  
SUP  
AIP SUP 05/24  
13 MAR 2024**

---

**Civilian Apron (stands 4,5,and 6): APRON BUILDING (Earthwork, Excavation, Backfilling Levelling & Compaction Works).**

**AREA (Civilian Apron)**

**1 INTRODUCTION**

- 1.1. This AIP Supplement aims to notify operators regarding the Earthwork, Excavation, Backfilling Levelling & Compaction Works for civilian apron stands (4,5,6).
- 1.2. The working area related to apron building work is provided in attachment.
- 1.3. This AIP Supplement will remain in force until the end of scope of work and civilian apron stands activation.

**2 PURPOSE**

- 2.1. Inform pilots and operators about the duration and timeline of working Area and closure of civilian apron stands (4,5,6) in Taif Airport.
- 2.2. Disseminate the temporary operating procedures.
- 2.3. Detailed the affected areas in the airport.
- 2.4. Detail the safety control measures.

**3 PHASES OF WORK**

- 3.1. Closure a part of the civilian apron.
- 3.2. Construct a temporary fence around working area (height: 2.40 m).
- 3.3. Start Earthwork, Excavation, Backfilling Levelling & Compaction Works.

#### 4 TIMELINE, OPERATIONAL PROCEDURES AND SAFETY MEASURES

Area	Duration	Start–End Dates	Construction activities	Safety measures
civilian apron stands (4,5,6)	120 days	15-MAR-24 TO 13-JUL-24	<ul style="list-style-type: none"> <li>-Installation of safety barriers &amp; security fence.</li> <li>- the location shall be checked to ascertain the type of soil to be excavated and appropriate equipment shall be deployed.</li> <li>- remove the existing apron asphalt and excavation for foundations of steel structures</li> <li>- Compact the existing subgrade</li> <li>- New rigid pavement Portland cement concrete as per approved drawings.</li> <li>- Spray the anti-termite chemical then provide the polythene sheet, and placement of portland cement concrete 38cm for rigid pavement to the required level.</li> </ul>	<ul style="list-style-type: none"> <li>- Barrier located at the boundary of the construction areas to avoid any uncontrolled access.</li> <li>- Steady lights on the barrier that isolates the working area.</li> </ul>

#### 5 PRECAUTIONS

- 5.1. During all phases of the project, pilots must be careful of construction area
- 5.2. During construction pilots should pay attention when taxiing near the work area
- 5.3. Pilots must carefully check AIP amendments and NOTAMS for any updates
- 5.4. Presence of construction workers, materials, and equipment in work area.
- 5.5. During all phases of the project TWY "B East" will be limited for code C aircrafts.

## 6 TEMPORARY FENCE & EQUIPMENT

A temporary fences and equipment cranes will be used for developing the area of the work indicated with the following coordinates. Please note that the mentioned coordinates are not the exact location of the equipment but represent the equipment movement zones. However, pilots must pay attention to the equipment all over the working area

Obstacles during work at civilian apron stands (4,5,6).								
Location	LATITUDE	LONGITUDE	Height AGL	Height AGL	Height AMSL	Height AMSL	Work Start	Work Finish
			Meter	Feet	Meter	Feet		
1	21°2856.24 N	040°3313.97 E	23	75.459	1453.38	4767.06	15-MAR-24	13-JUL-24
2	21°2856.99 N	040°3316.96 E	23	75.459	1452.51	4765.45	15-MAR-24	13-JUL-24
3	21°2854.16 N	040°3317.80 E	23	75.459	1452.81	4766.44	15-MAR-24	13-JUL-24
4	21°2853.40 N	040°3314.77 E	23	75.459	1453.45	4768.54	15-MAR-24	13-JUL-24

## 7 INQUIRIES

For any inquiries on the airside development project at Taif Airport, please contact:

1. Name: Abdulrahman .S. Alhashmi  
 Function: Taif International Airport director  
 Email: aalhashmi@cluster2airports.sa  
 Tel: +966 55 554 3440

2.  
 Name: Mashari .A. Alhakami  
 Function: Operation supervisor  
 Email: mealhakami@cluster2airports.sa  
 Tel: +966 55 355 5265

**THIS PAGE  
INTENTIONALLY  
LEFT BLANK**

**AERODROME CHART - ICAO** 21°29'00"N 040°32'40"E **ELEV 4848**

TWR 118.7 237.6  
SMC 121.9 335.3  
ATIS 127.05

**TAIF / Taif International**

RWY	DIRECTION	THR	BEARING STRENGTH
07	071°	21°28'38"N 040°31'15"E	PCN 62 F/A/X/T ASPHALT
25	251°	21°29'10"N 040°33'20"E	
17	169°	21°30'23"N 040°32'27"E	PCN 62 F/A/X/T ASPHALT
35	349°	21°28'35"N 040°32'43"E	

TAXIWAY DESIGNATOR	Width	BEARING STRENGTH (PCN)	Surface
TWY A, TWY A1, TWY A2, TWY A3, TWY A4, TWY A5, TWY A6	23	48/F/A/X/T	ASPHALT
TWY M, TWY M1, TWY M2, TWY M3	23	51/F/A/X/T	ASPHALT

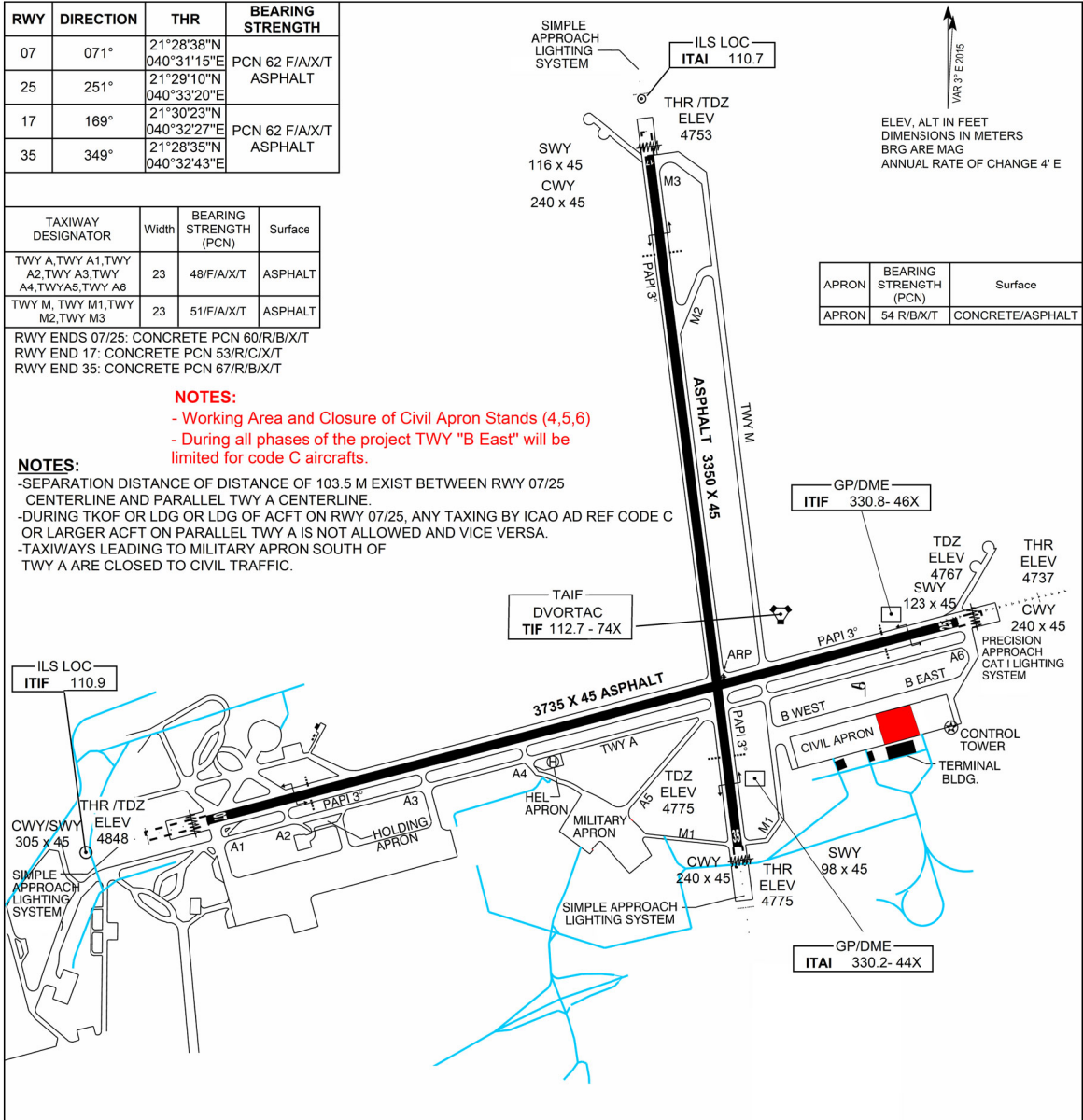
RWY ENDS 07/25: CONCRETE PCN 60/R/B/X/T  
RWY END 17: CONCRETE PCN 53/R/C/X/T  
RWY END 35: CONCRETE PCN 67/R/B/X/T

**NOTES:**

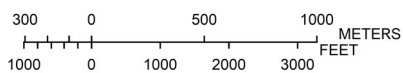
- Working Area and Closure of Civil Apron Stands (4,5,6)
- During all phases of the project TWY "B East" will be limited for code C aircrafts.

**NOTES:**

- SEPARATION DISTANCE OF DISTANCE OF 103.5 M EXIST BETWEEN RWY 07/25 CENTERLINE AND PARALLEL TWY A CENTERLINE.
- DURING TKOF OR LDG OR LDG OF ACFT ON RWY 07/25, ANY TAXI BY ICAO AD REF CODE C OR LARGER ACFT ON PARALLEL TWY A IS NOT ALLOWED AND VICE VERSA.
- TAXIWAYS LEADING TO MILITARY APRON SOUTH OF TWY A ARE CLOSED TO CIVIL TRAFFIC.



- NOTES:**
- 1. TAIF INTERNATIONAL AIRPORT (OETF) MAY BE USED AS AN ALTERNATE FOR FOR B747-8 AIRCRAFT SUBJECT TO THE FOLLOWING LIMITATIONS.
  - 2. B747-800 AIRCRAFT ALL OPERATING WEIGHT DOES NOT EXCEED 350 TONS.
  - 3. B747-800 AIRCRAFT SHALL USE RWY 17/35 AND PARALLEL TAXIWAY M & B.
  - 4. PARKING PAD NO.11 ON CIVIL APRON AT NOSE-IN POSITION IS THE ONLY AUTHORIZED PARKING FOR 747-8 AND PILOT MUST CONTACT TOWER FOR PARKING INSTRUCTIONS.



LEGEND	
WIND DIRECTION INDICATOR	
SERVICE ROAD	
RAILROAD	
BAK-14 ARRESTER GEAR	
BARRIER NET	
WORKING AREA	