

Tel: 966 12 684 8046
966 12 684 8959
Fax: 966 12 640 5622
AFS OEJDYKYX
<http://www.sans.com.sa>
E-mail: aim@sans.com.sa

KINGDOM OF SAUDI ARABIA
GENERAL AUTHORITY OF CIVIL AVIATION
SAUDI AIR NAVIGATION SERVICES
AERONAUTICAL INFORMATION MANAGEMENT
P. O. BOX 929, JEDDAH - 21421

**AIP
SUP**
AIP SUP 06/24
26 MAR 2024

DAMMAM / KING FAHD INTL AIRPORT – (OEDF) AERODROME CONSTRUCTION PROJECT

PHASE-2 in the rehabilitation project of Western Runway and Taxiways

1 INTRODUCTION

1.1. From 26th March 2024, Phase 1 (Zone 3) which is the portion of TWY B from North of TWY C3 to the north end of TWY B will be open for Operations.

However, construction work will close the portion of TWY B from north of TWY C3 to south of TWY C2 for the Phase 2 works. The followings TWY connections will also be closed during Phase 2; TWY C2, TWY C3 and TWY B2

1.2. This AIP supplement provides flight crews, operators, service providers, concerned personnel and stakeholders with detailed information and changes in the OEDF movement Zone during the rehabilitation project.

1.3. The remaining work for the west RWY (16R/34L) and associated TWYs Project is Phase 2 of TWY B north of TWY C3 to south of TWY C2. The Project is a very significant maintenance program for aerodrome infrastructure, and the maintenance program is intended to renovate and eliminate any damaged/broken in the pavement, ground lighting, signages and markings.

1.4. The Project which includes the Primary Runway and Taxiway B (including the link Taxiways) consists of 2 Phases:

- Phase 1 fully completed including:

1. Runway 16R/34L
2. TWY B south of TWY C2 to the south end of TWY B
3. TWY B north of TWY C3 to the north end of TWY B

- Phase 2 is the portion of TWY B between TWY C2 and TWY C3 (planned)

Note: Check the attached illustration of the phasing plan.

1.5. Due to criticality of having Workers, Vehicles, and Equipment near the manoeuvrings area, and for precautionary measures, a security fence with height of 3.0 m will be deployed along Phase 2 extents. Lit signages and markings (Closed X sign) will be deployed on all affected entrances for Pilot awareness to Phase 2.

2 VALIDITY

- 2.1. Work of Phase 1 is completed and will be fully open to Operations.
- 2.2. Phase 2 will be closed from 15th March 2024 till Q2 2024 Tentatively

3 PURPOSE

- 3.1. Sharing essential information including illustrations and timelines for Phase 2 would enhance planning, decision-making, increase the situational awareness, and mitigate the potential hazards that may appear due to any causal factors associated with human factors, limitations, or complexity during the reduced facility where the operation managed under unusual procedure.
- 3.2. During the construction periods, pilots must exercise more caution when taxiing near the construction Zone
- 3.3. Refer to NOTAMs in the daily bulletin (PIB) for the start & end dates of expansion work phases.

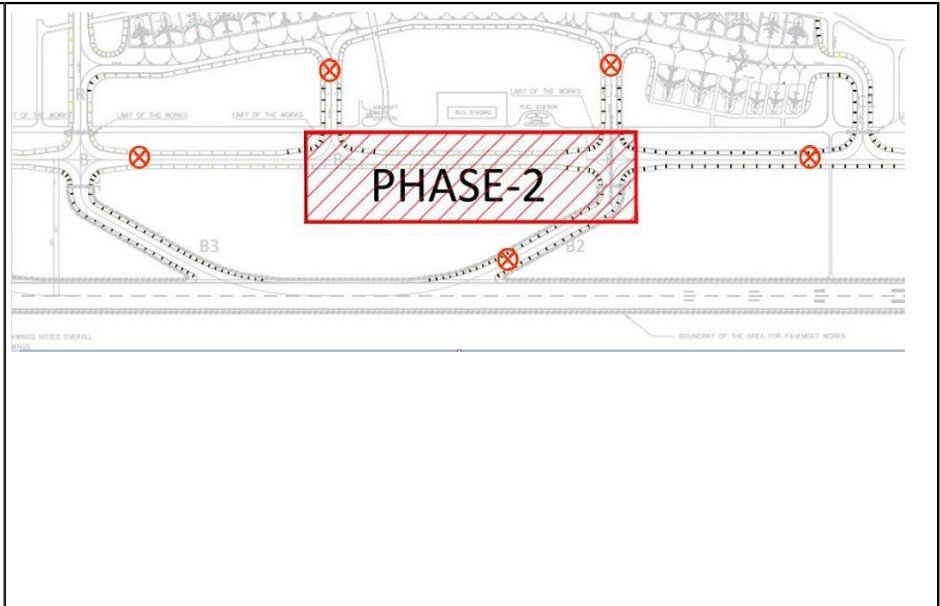
4 AIRSIDE CONSTRUCTION WORKS – Phase 2

- 4.1.

The airside construction works as shown in the below drawing will be only Phase 2 as detailed in this AIP SUP and NOTAMs.

Works will take place on Taxiway Bravo from the Zone just south of Taxiway C2 upto the zone just north of Taxiway C3 including the closure of TWY C2, TWY C3 and TWY B2.

To prevent unintentional Pilot mis-take during the closure of the portions of TWY B, a warning sign (X) would be Marked out on the surface or by Taxiway-side to caution Pilots as shown on the sketch adjacent.



Facts:

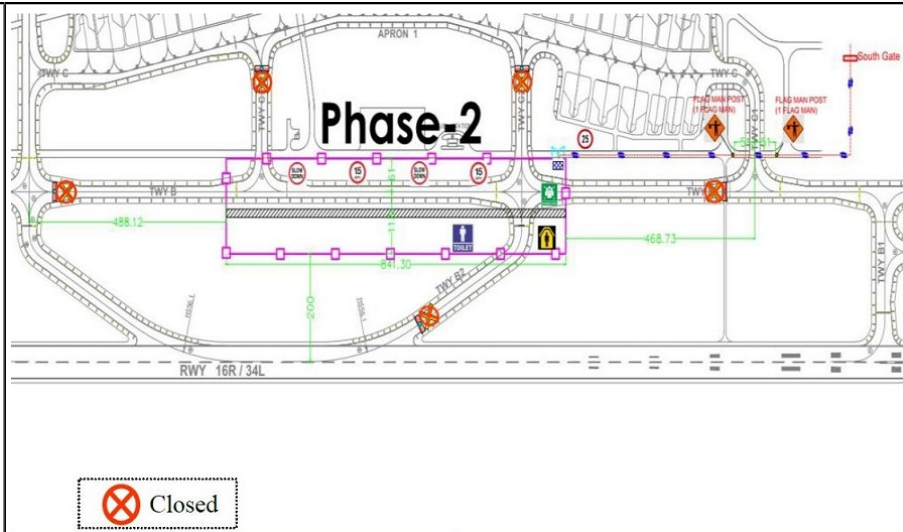
- TWY B has 28 Meters width + safety buffer.
- TWY B strip is 60 Meters width from each side of TWY Centre-line.
- Maximum (WS) for Code (F) is up to 80 Meters.
- The standards Minimum separation distances between taxiways and an object should be 40+ Meters (ICAO Doc 9157 part-2 para 1.2.12)

Remark:

Access to Apron 1 will be through TWY C via TWY C1 or TWY R only.

TWY C2, TWY C3 and TWY B2 connections will be closed for the duration of the works.

There will be no impact to Apron 2 Operations.



4.2. The East Runway 16L/34R and its Taxiways system, including TWY (R) connection to Apron-1 via TWY C will not be affected by any on-going construction.

4.3. Phase 2 will be considered completed once it has been announced by NOTAM.

4.4. All operators, service providers and concerned personnel shall check the daily NOTAM bulletin for any updates as required.

Table 1, PHASE 2
The closure of Taxiway Bravo north of TWY C3 to south of TWY C2

Zone	Construction Activities	Operational Procedures	Safety Measures
PHASE 2	<ul style="list-style-type: none"> Security fence, 3m height installation for the working Zone perimeter limitation for Phase 2 Airside works. Pavement rehabilitation and AGL upgrade on Taxiway B from TWY C2 to TWY C3. Taxiway Bravo pavement rehabilitation and New AGL upgrade. 	N/A	<ul style="list-style-type: none"> Equipment and vehicles motion will be under safety instructions. Barriers and fences located in the boundary of construction Zone to avoid any uncontrolled access to existing apron. Periodically, water shall be sprayed to avoid dust. Construction Equipment such as Concrete Pump, and Mobile Cranes will respect all surface limits requested on OLS. Any particular noisy operations (e.g.: use of hydraulic breakers) will be programmed to minimize disturbance. Deposit all Foreign Object Debris (FOD) in the bins provided.

5 PRECAUTIONS

5.1. During the construction period, pilots are advised to take note of the precautions when taxiing near the work Zones as shown in the illustration drawings.

5.2. Movements of construction equipment and vehicle near worksite adjacent to the vicinity of the work Zones are controlled by work personnel stationed on site

6 ATC Operational Procedures During Phase 2

RWY34L	DEP	Apron 1	Apron 2
		Aircraft will taxi out via TWY C1 to TWY B or TWY B1 holding position for RWY 34L and await further instructions by ATC.	Aircraft will taxi out to Secondary Runway 34R-16L following normal operating procedures.
	ARR	Apron 1	Apron 2
		Aircraft lands on RWY34L to vacate the RWY via B3, B4, B5 or TWY B. Entering Apron 1 via TWY B, TWY R then TWY C. Aircraft lands on RWY34L to vacate the RWY via B3, B4, B5 or RWY end. Entering Apron 2 via TWY B, then TWY P2 or TWY P1.	Aircraft lands on RWY34L to vacate the RWY via B3, B4, B5 or RWY end. Entering Apron 2 via TWY B, then TWY P2 or TWY P1.

RWY16R	DEP	Apron 1	Apron 2
		Aircraft will taxi out via TWY C and TWY R to TWY B or TWY B5 holding position for RWY 16R and await further instructions by ATC	Aircraft will taxi out via TWY P1 or P2 onto B and await further instructions by ATC
	ARR	Apron 1	Apron 2

		Aircraft lands on RWY16R to vacate the RWY via TWY B1 or RWY end. Entering Apron 1 via TWY C1 and through TWY C.	Aircraft lands on RWY16L and proceeds to Apron 2 following normal operating procedures.
--	--	--	---

7 General Procedures

7.1. All taxiing-out aircraft from Apron 1 for RWY 16L shall hold-short of TWY (Romeo) until obtaining permission from ATC to enter TWY (Romeo).

7.2. All taxiing-out aircraft via TWY (Romeo) shall hold-short of RWY 16L/34R until obtaining ATC clearance to cross the RWY.

7.3. Drivers of vehicles shall give priority to taxiing aircraft and exercise extra caution.

7.4. RVR system at this stage for RWY 16R/34L is only 1 sensor at the middle of the Runway. However, RVR sensors are fully operational on RWY 16L/34R.

If the visibility is less than 800m the Runway 16L/34R (with active RVR system) will be utilized.

7.5. Stop bar lights for RWY 16R/34L will be always operational due to the rehabilitation project and ALCMS upgrade. Pilots are to stop at all stopbars and wait for ATC clearance before entering the RWY.

7.6. Construction Material and Equipment will enter to Phase 2 work zone through the South Gate utilizing the existing service roads, crossing TWY C1 and then entering the fenced working zone. FOD controls, flagman and sweepers will be in position throughout the works to ensure no disruption to Airport Operations.

Refer to Appendix 10.2 Fencing Plan for more information.

8 CONSTRUCTION EQUIPMENT TYPES TO BE UTILIZED

#	Equipment Description	Maximum Height + Ground Elevation	Maximum Height	Project Phase
1	Asphalt Milling Machine	27 Meter	5 Meter	Phase 2
2	Truck Dumper	26.5 Meter	4.5 Meter	Phase 2
3	Backhoe Loader	25.5 Meter	3.5 Meter	Phase 2
4	Front Loader	26 Meter	4 Meter	Phase 2
5	Skid Steer Loader	24 Meter	2 Meter	Phase 2
6	Water Tanke	25.5 Meter	3.5 Meter	Phase 2
7	Excavator	26.5 Meter	4.5 Meter	Phase 2
8	Soil Grader	26 Meter	4 Meter	Phase 2
9	Bulldozer	26 Meter	4 Meter	Phase 2
10	Passenger Bus	25 Meter	3 Meter	Phase 2
11	Pick-Up	23.8 Meter	1.8 Meter	Phase 2
12	Lighting Tower	26 Meter	4 Meter	Phase 2
13	Welding Machine	23.5 Meter	1.5 Meter	Phase 2
14	Truck with Crane/ Boom Truck	27 Meter	5 Meter	Phase 2
15	Tractor Head	25.5 Meter	3.5 Meter	Phase 2
16	Forklift	25.5 Meter	3.5 Meter	Phase 2
17	Compactor	25.5 Meter	3.5 Meter	Phase 2
18	Asphalt Paver	26 Meter	4 Meter	Phase 2
19	Chain Excavator	27 Meter	5 Meter	Phase 2
20	Utility Truck/Dyna	25 Meter	3Meter	Phase 2
21	Power Generator	24.5 Meter	2.5 Meter	Phase 2
22	Mobile Crane	32 Meter	10 Meter	Phase 2
23	Ready Mix Mobile Concrete Mixer	26 Meter	4 Meter	Phase 2

9 INQUIRIES

For any inquiries on the airside development project please contact:

Name: Mr. Hamad R. Alkhumaish

Function: Airfield Operations Director

Email: halkhumaish@daco.sa
Tel.: 013 668 9559 (8 AM – 4 PM Local Time/ Sunday – Thursday).

AIP SUP 03/24 hereby replaced.

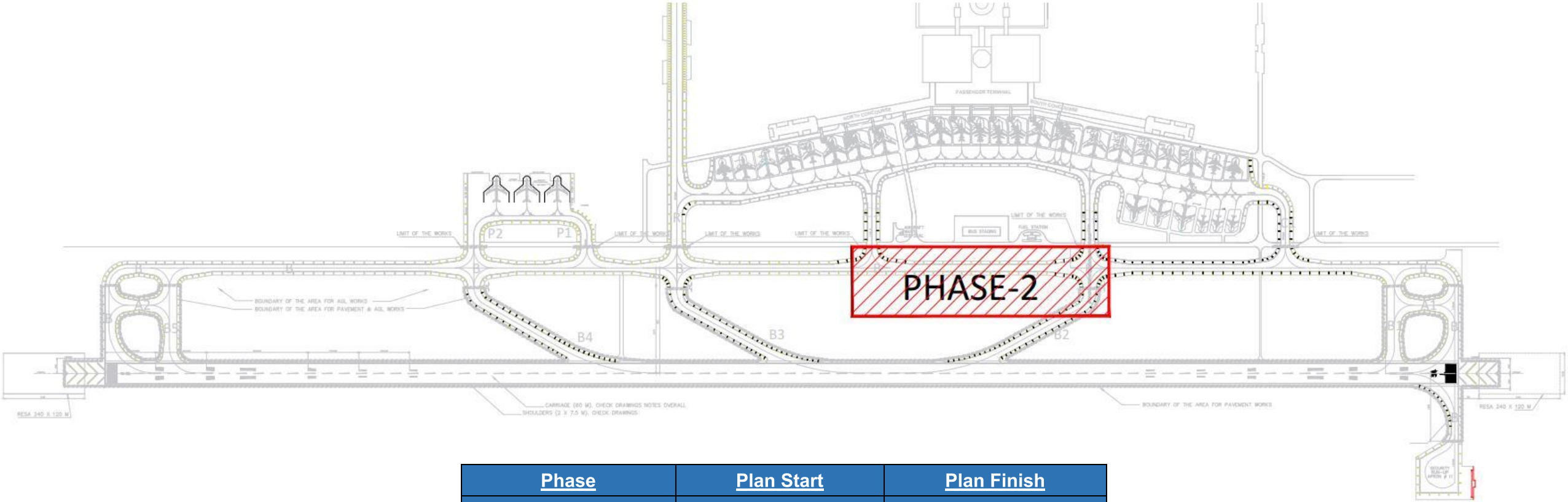
10 APPENDIX

- 10.1. PHASING PLAN (including Phase-1 (all Zones) and Phase-2)
- 10.2. Phase 2 – Fencing Plan
- 10.3. Phase 2 – Arrival & Departure Route Layouts
- 10.4. AIP Chart for Phase 2 (including ATC instruction).

THIS PAGE
INTENTIONALLY
LEFT BLANK

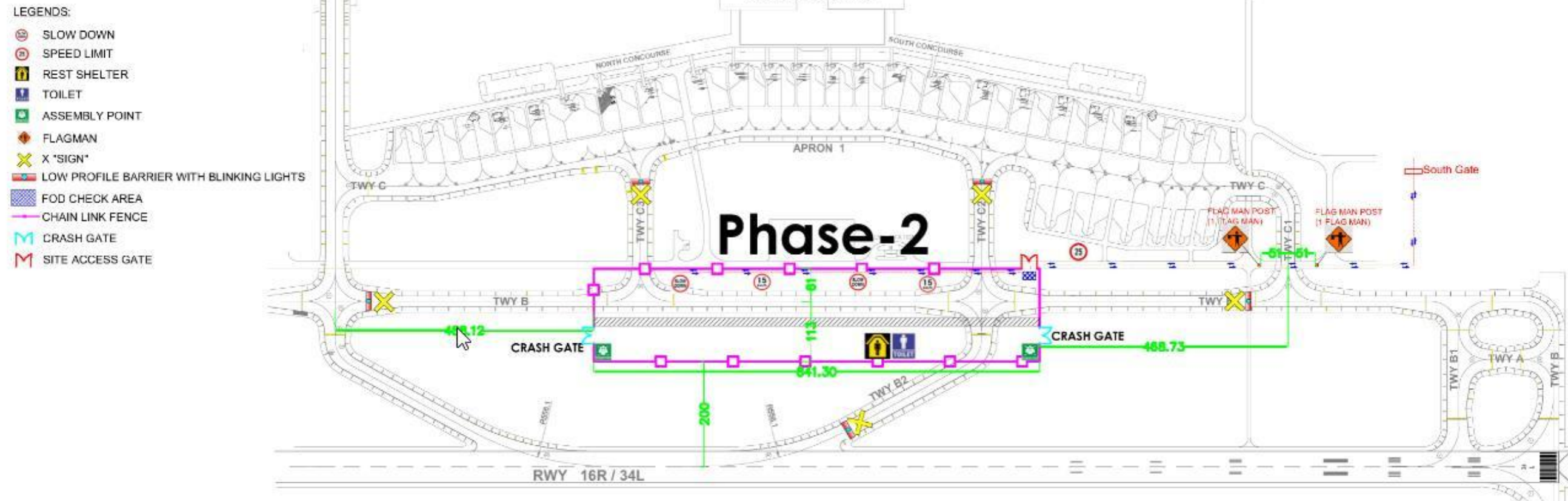
10.1 PHASING PLAN

PHASE - 2



Phase	Plan Start	Plan Finish
Phase 1	10-Jul-23	Completed
Phase 2	15-Mar-24	TBC

10.2 FENCING PLAN

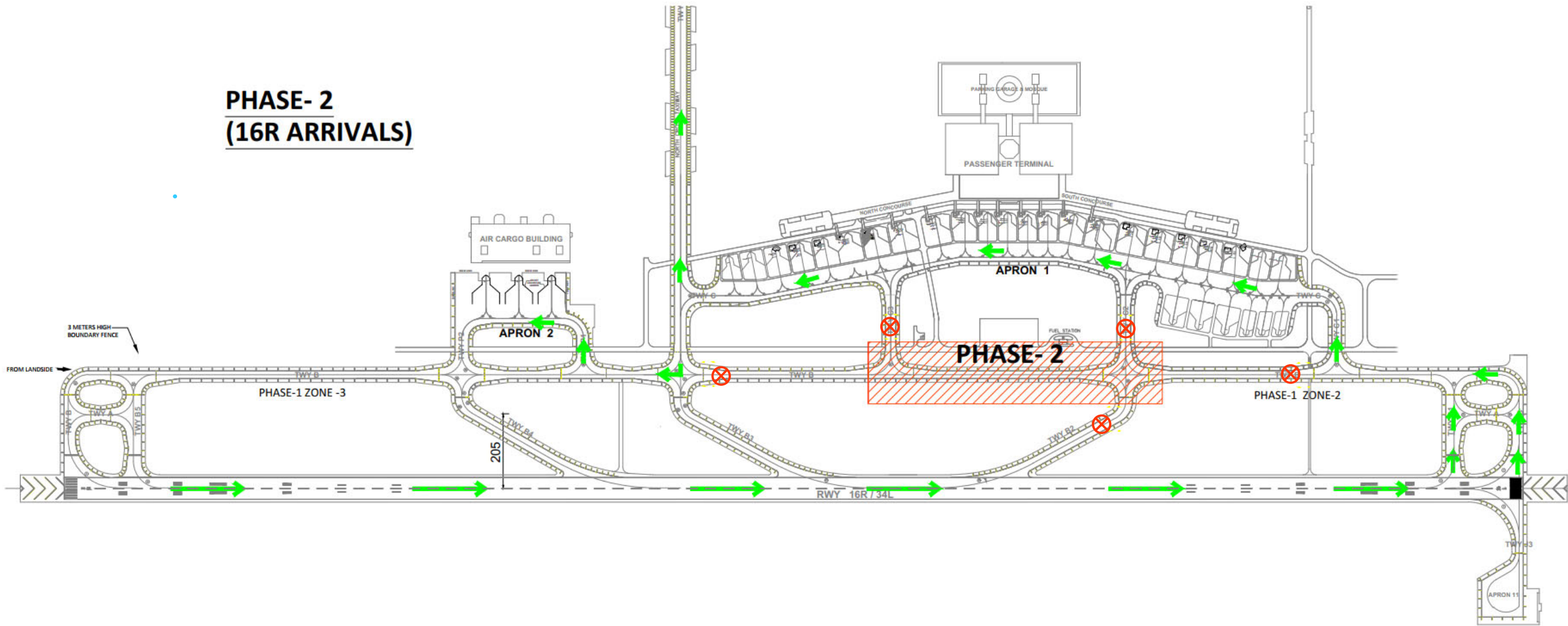


Notes:

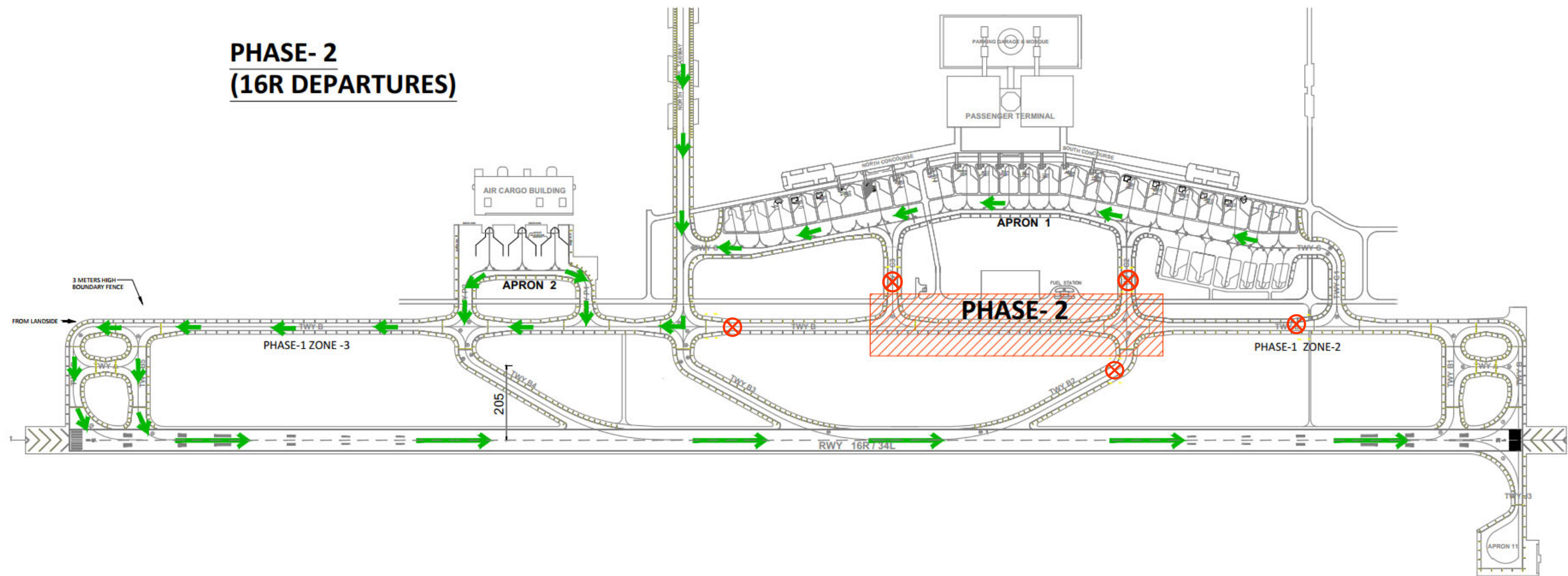
1. Two Emergency crash gates will be provided in case of emergency evacuation.
2. Two-way vehicle traffic signs will be installed.
3. Parking area will be provided for light and heavy vehicles.
4. Flagman will be available with the moving equipment.
5. All employees must have a valid airport Gatepass.
6. All driver and operator must have a valid airside driving permit.
7. Pedestrian walkway with adequate barrier will be provided to avoid traffic collision.
8. All moving heavy equipment must have reverse alarm and orange beacon light.
9. PPE will be mandatory for all workers including as a minimum H/V vest, Hard hat, Safety Shoes.
10. Speed limit inside Phase-2 will be 15 kph, Speed limit signs will also be installed.
11. Security fence shall be provided to demarcate the work limits, Mesh will be installed on the fence to maximise FOD containment.

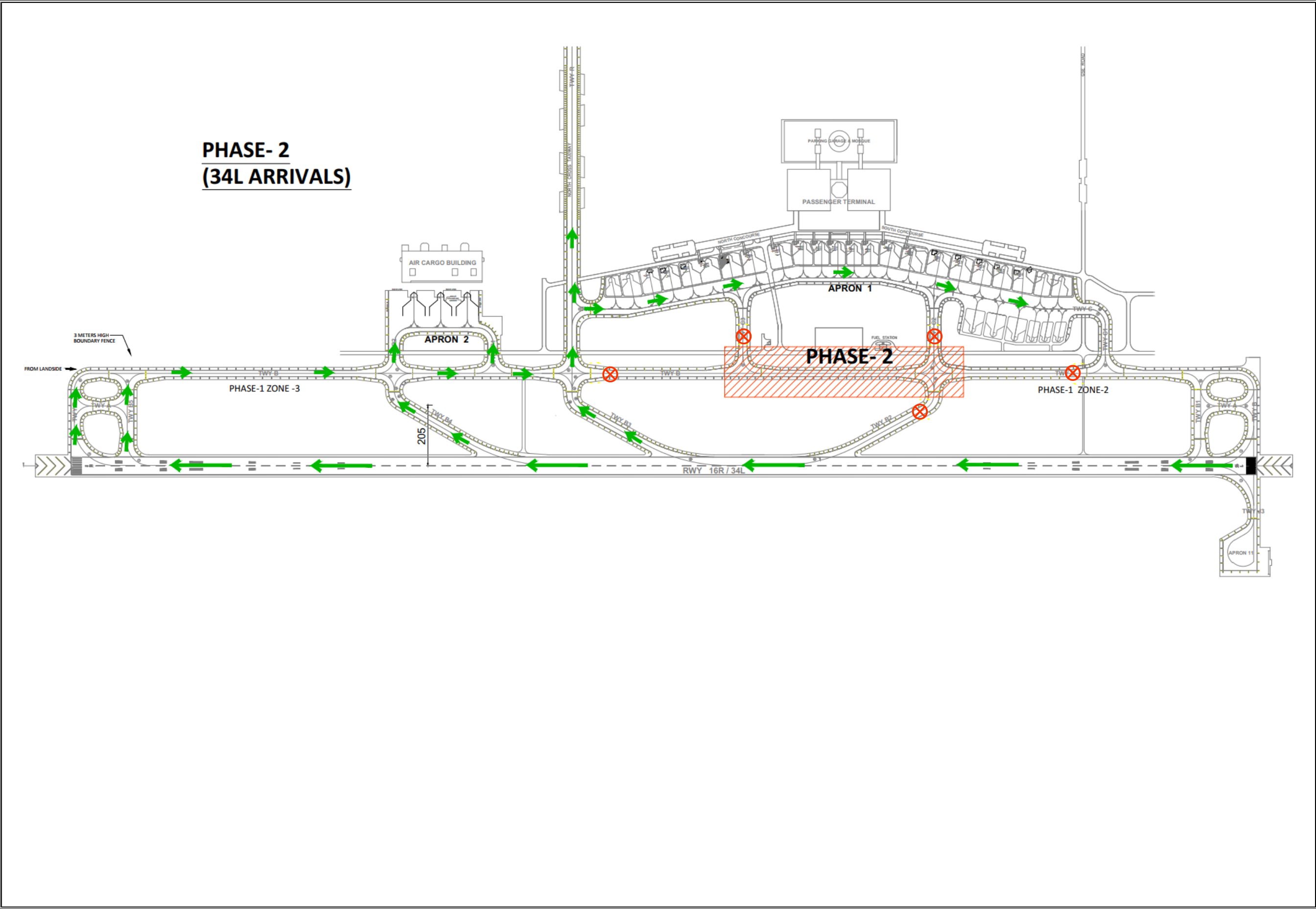
10.3 PHASE 2 ROUTING LAYOUTS PLAN

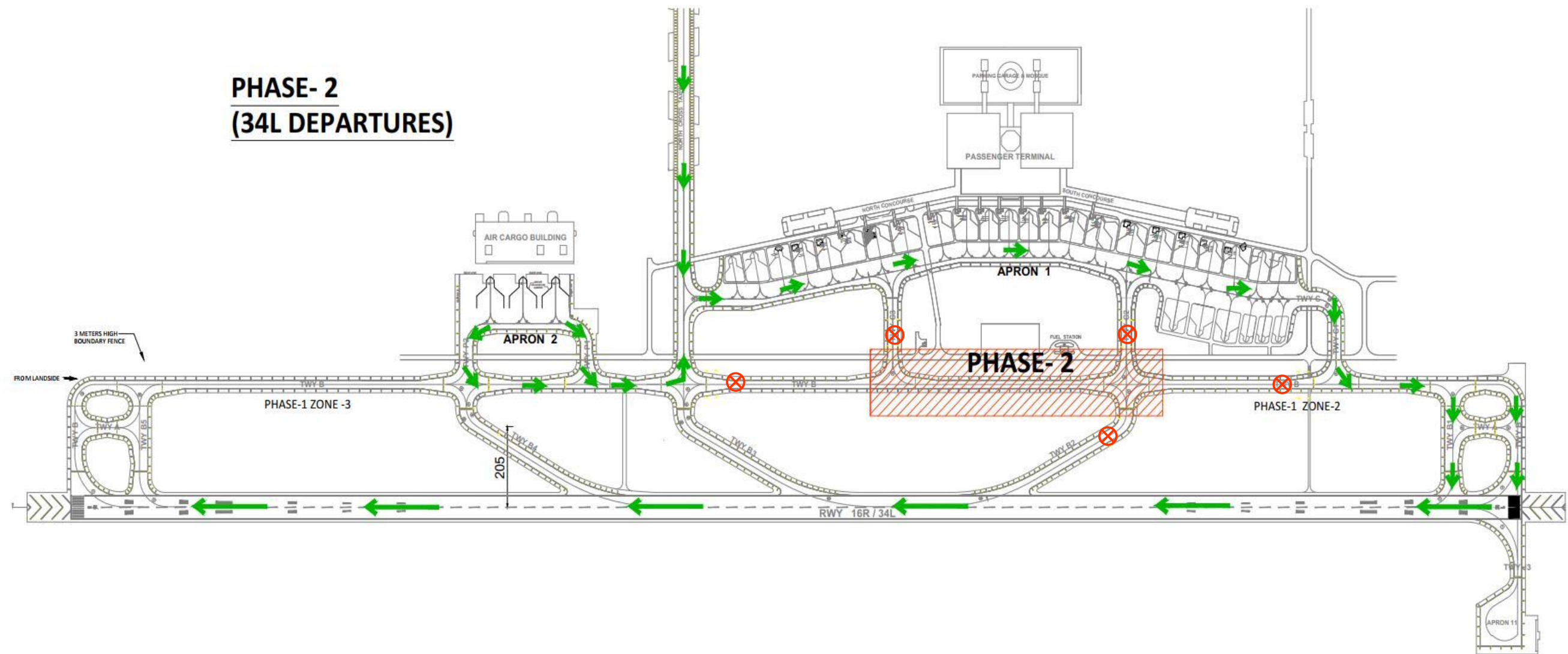
PHASE- 2
(16R ARRIVALS)



- 3 m High Fence
- Taxiway Closed
- Construction Work Zone







AERODROME CHART - ICAO

26°28'16"N
049°47'52"E

ELEV 75

TWR	118.05 (E)	124.35 (W)
SMC	121.65	121.75
ATIS	128.05	

DAMMAM / KING FAHD INTERNATIONAL

RWY	DIRECTION	THR	THR GUND	BEARING STRENGTH
16L	161°	26°29'19"N 049°48'13"E	81	PCN 103 F/A/X/T CONCRETE/ ASPHALT
34R	341°	26°27'14"N 049°48'52"E	81	PCN 103 F/A/X/T CONCRETE/ ASPHALT
16R	161°	26°29'19"N 049°46'53"E	81	PCN 111 F/A/X/T CONCRETE/ ASPHALT
34L	341°	26°27'14"N 049°47'32"E	81	PCN 111 F/A/X/T CONCRETE/ ASPHALT

TAXIWAY DESIGNATOR	Width	BEARING STRENGTH (PCN)	Surface
A	23	103/F/A/X/T	CONCRETE/ASPHALT
B	28	111/F/A/X/T	CONCRETE/ASPHALT
B2	28	111/F/A/X/T	CONCRETE/ASPHALT
B3	28	111/F/A/X/T	CONCRETE/ASPHALT
B4	28	111/F/A/X/T	CONCRETE/ASPHALT
B5	28	111/F/A/X/T	CONCRETE/ASPHALT
C	28	103/F/A/X/T	CONCRETE/ASPHALT
C1	28	103/F/A/X/T	CONCRETE/ASPHALT
C2	28	103/F/A/X/T	CONCRETE/ASPHALT
C3	28	103/F/A/X/T	CONCRETE/ASPHALT
H	28	103/F/A/X/T	CONCRETE/ASPHALT
J	23	103/F/A/X/T	CONCRETE/ASPHALT
J1	28	103/F/A/X/T	CONCRETE/ASPHALT
J2	28	103/F/A/X/T	CONCRETE/ASPHALT
J3	28	103/F/A/X/T	CONCRETE/ASPHALT
P1	28	103/F/A/X/T	CONCRETE/ASPHALT
P2	28	103/F/A/X/T	CONCRETE/ASPHALT
R	30	103/F/A/X/T	CONCRETE/ASPHALT
Z	28	111/F/A/X/T	ASPHALT

APRON	BEARING STRENGTH (PCN)	Surface
APRON 1	64/R/B/X/T	CONCRETE
APRON 11	64/R/B/X/T	CONCRETE
APRON 2	64/R/B/X/T	CONCRETE
APRON 4	64/R/B/X/T	CONCRETE
APRON 5	64/R/B/X/T	CONCRETE
APRON 8	64/R/B/X/T	CONCRETE

LEGEND	
RWY VISUAL RANGE (RVR)	▽
WIND DIRECTION INDICATOR	9
HELIPAD	Ⓜ
SERVICE ROAD	—
FENCE	—x—x—x—
HOTSPOT	○

